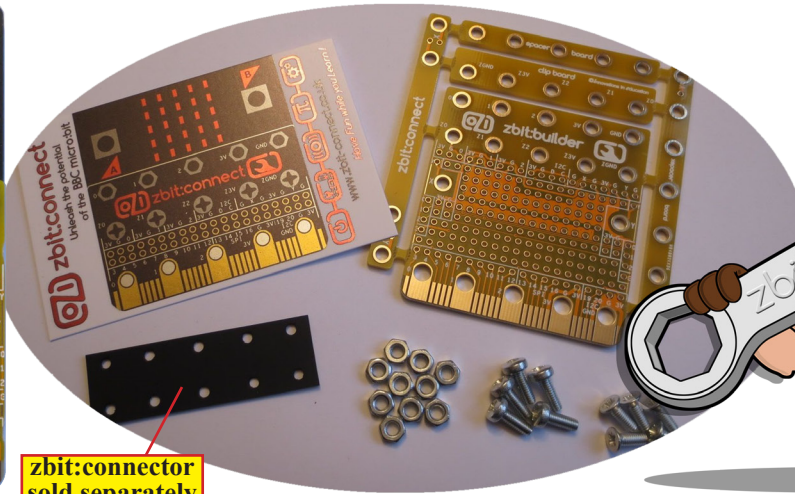
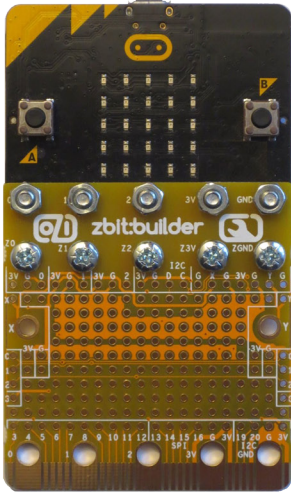




zbit:builder



for the BBC micro:bit



zbit:connector
sold separately



Build your *own* electronics and attach it to your BBC micro:bit with zbit:builder!

"Have Fun while you Learn!"

zbit:builder provides a **grid of up to 20x11 holes** for you to **build your own electronics** for the micro:bit. This grid consists of a central area of 14x9 holes for **soldering your components** surrounded by holes giving access to **all of the micro:bit's GPIO** and power rails.

zbit:builder has been designed to make it easy for you to build boards using a vast range of **Sensors, Display Boards** and wireless functions such as **WiFi** and **GPS** (available from various companies) which can then be attached to **your micro:bit!**

Like all 'zbit:connect' family boards, **zbit:builder** uses the **unique 'zbit:connector'** which allows it to be simply '**bolted**' on to the bottom of **your micro:bit!**

Furthermore the **micro:bit compatible edge connector** at the bottom allows it to be plugged into **other micro:bit accessories** or attached to **more zbit:connect boards!**

www.zbit-connect.co.uk

zbit:builder Data Sheet (Preliminary)

Contents

- 1 x zbit:builder board
- 1 x Spacer board
- 1 x Clip board
- 1 x XSpacer board
- 1 x XY board
- 5 x M3x8 Panel Head Screws
- 5 x M3x8 Countersunk Head Screws
- 10 x M3 Nuts

(zbit:connector - optional extra - sold separately*)w

*A zbit:connector is only required if board connects to small pads P3-20

For more information see 'zbit:connect family guide'

Features

The **zbit:builder** board has the following features:-

- **52x55mm PCB** ('full size' zbit:connect board)
- **zbit:connector compatible** edge connector at the top
- **micro:bit compatible** edge connector at the bottom
- **Top Row Header** for connection to P0, P1, P2, I2C, 3V, GND, X & Y
- **Bottom Row Header** for connection to P3-20, 3V & GND
- **Z0, Z1, Z2, Z3V & ZGND Fixing Holes**
- **X & Y Fixing Holes**
- **Central grid** of holes to accommodate up to three 18 pin 0.3" DIL IC's mounted vertically, up to two 28 pin 0.3" DIL IC's mounted horizontally, one 36 pin 0.6" DIL IC, one 40 pin 0.9" DIL module or a 40 pin boxed header
- Connects to other **full size or half size zbit:connect boards** in X, Y or Z axis
- Can be plugged into **micro:bit accessories from other companies**

Tools Required

- Pozidrive Screwdriver
- Pliers
- Small File
- Wire Cutters
- Soldering Iron
- Solder

Assembly Instructions

- Visit www.zbit-connect.co.uk

WARNING!
CONTAINS SMALL PARTS
SO IS NOT SUITABLE FOR
CHILDREN UNDER 3 YEARS



**SOLDERING SHOULD BE
SUPERVISED BY AN ADULT**