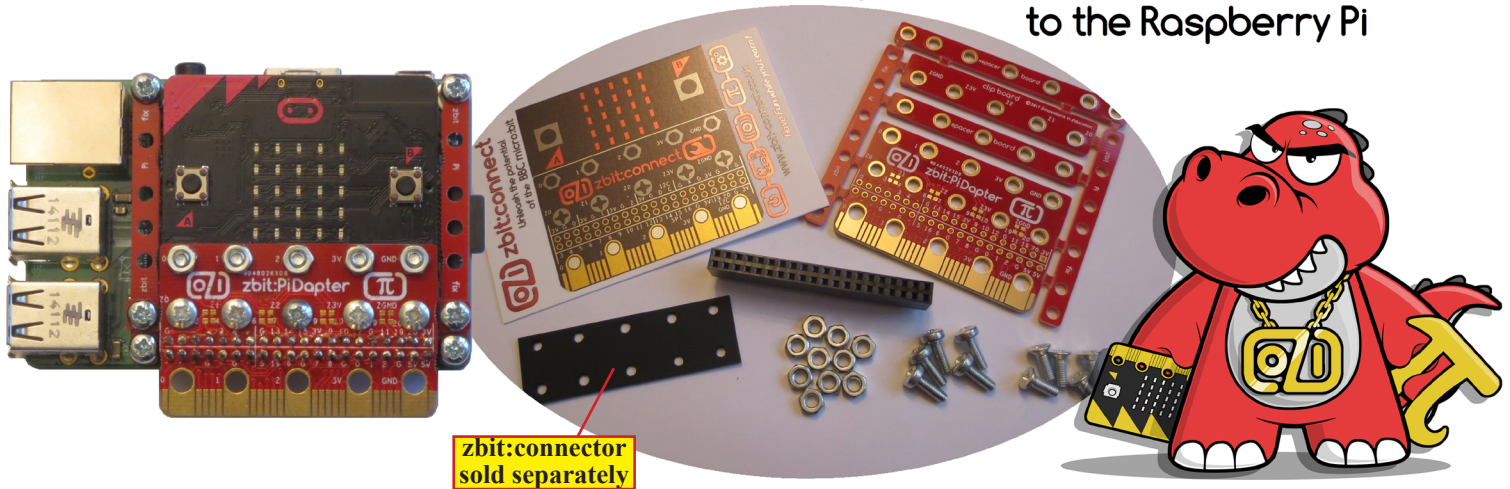


# @ zbit:PiDapter $\pi$

connecting the BBC micro:bit  
to the Raspberry Pi



**Plug your BBC micro:bit onto your Raspberry Pi  
with zbit:PiDapter!**

*"Have Fun while you Learn!"*

**zbit:PiDapter connects the micro:bit's GPIO to the Raspberry Pi GPIO  
with your micro:bit plugged directly onto the  
40 way GPIO Header of the Raspberry Pi thus allowing you to  
*control your Raspberry Pi from your micro:bit!***

For instance you could create a **tilt controlled Raspberry Pi game** by  
**programming the micro:bit to send 'tilt' signals to the Raspberry Pi via  
GPIO using the micro:bit's accelerometer sensor.**

Or you could create a **remote controller for your Raspberry Pi**  
by using a **second micro:bit to send radio commands  
to the micro:bit on your Raspberry Pi.**

Like all 'zbit:connect' family boards, **zbit:PiDapter** uses the ***unique***  
**'zbit:connector'** which allows it to be simply '**bolted**' on to the bottom  
of your micro:bit!

Furthermore the **micro:bit compatible edge connector** at the bottom  
allows it to be plugged into ***other*** micro:bit accessories or attached to  
***more zbit:connect boards!***

**[www.zbit-connect.co.uk](http://www.zbit-connect.co.uk)**

# zbit:PiDapter Data Sheet (Preliminary)

## Contents

- 1 x zbit:PiDapter board
- 1 x Spacer board
- 1 x Clip board
- 1 x XSpacer board
- 2 x zbit:pi:fix boards
- 5 x M3x8 Panel Head Screws
- 5 x M3x8 Countersunk Head Screws
- 10 x M3 Nuts
- 1 x 40 pin connector (*requires soldering*)

(zbit:connector - optional extra - sold separately\*)

\*A zbit:connector is only required if board connects to small pads P3-20

For more information see 'zbit:connect family guide'

## Features

The **zbit:PiDapter** board has the following features:-

- **52x33mm PCB** ('half size' zbit:connect board)
- **zbit:connector compatible** edge connector at the top
- **micro:bit compatible** edge connector at the bottom
- **Raspberry Pi compatible** 40 pin connector in the centre
- Compatible with **Raspberry Pi A+, B+, 2, 3 and Zero** (40 way GPIO Header)
- Compatible with **Raspberry Pi A and B** (26 way GPIO Header) by fitting a 26 way adapter (*not included*)
- **With zbit:connector\*** it connects **micro:bit GPIO P0, 1, 2, 5, 8, 11, 12, 13, 14, 15, 16** to the **Raspberry Pi** (P3, P4, P6, P7, P9, P10, P19, P20 can also be connected by fitting jumper links)
- **Without zbit:connector** it *only* connects **micro:bit P0, 1, 2** to the **Raspberry Pi**
- **Z0, Z1, Z2, Z3V & ZGND Fixing Holes**
- If required it can be bolted to the Raspberry Pi fixing holes using the **zbit:pi:fix** boards (*requires additional screws and spacers*)
- Connects to other **full size or half size zbit:connect boards** in the **Y axis only**
- Can be plugged into **micro:bit accessories from other companies**

## Tools Required

- Pozidrive Screwdriver
- Pliers
- Small File
- Soldering Iron
- Solder

## Assembly Instructions

- Visit [www.zbit-connect.co.uk](http://www.zbit-connect.co.uk)

### WARNING!

CONTAINS SMALL PARTS  
SO IS NOT SUITABLE FOR  
CHILDREN UNDER 3 YEARS



SOLDERING SHOULD BE  
SUPERVISED BY AN ADULT